

# PRORIL

50Hz

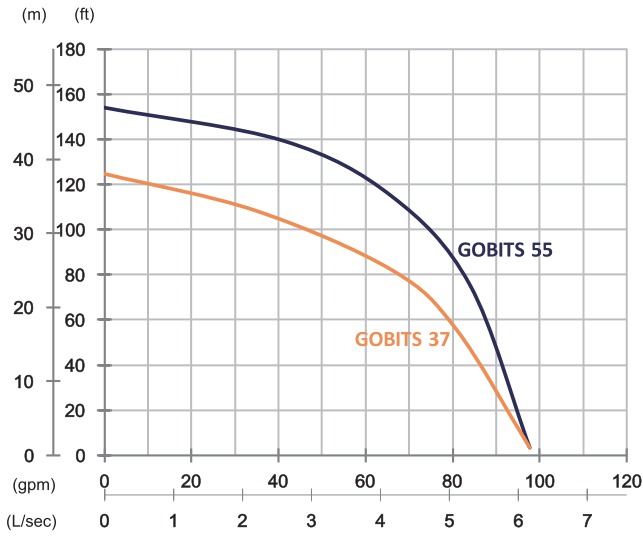
GOBITS Series, these grinder pumps meet the demanding needs of commercial and residential sewage applications. GOBITS series pumps employ a grinding mechanism to effectively grind and transfer solids under high pressure from one place to a higher or a distant place. Ideal for residential and low-pressure sewer applications.

Sewage Pump

## GOBITS 37/55

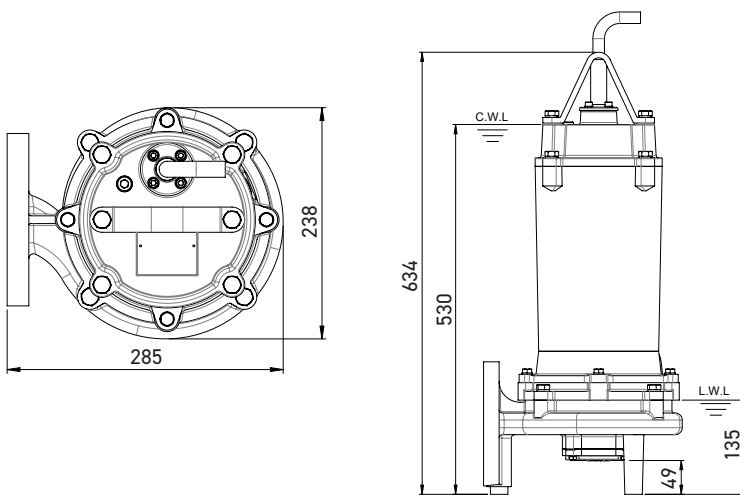
Grinder Pump





	GOBITS 37	GOBITS 55
<b>OUTPUT</b>	3.7 kW (5 HP)	5.5 kW (7.5 HP)
<b>OUTLET</b>	2" (50 mm)	2" (50 mm)
<b>Weight</b>	55 kg	61 kg
<b>HEAD</b>	Rated: 25 m Max: 38 m	Rated: 35 m Max: 47 m
<b>FLOW</b>	Rated: 4.2 L/s Max: 6.2 L/s	Rated: 4.2 L/s Max: 6.2 L/s

<b>Pump Type</b>	Electric Submersible Pumps	
<b>Motor</b>	Phase	3-Phase
	Type	Induction Motor
	Poles	2 Pole (2850 rpm)
	Insulation	Class F
	Protector	Circle Thermal Protector
	Starter	D.O.L.
<b>Lubricant</b>	Food Grade (ISO VG32)	
<b>Specs.</b>	Impeller Type	Vortex
	Shaft Seal	Double Mechanical Seal Silicon Carbide VS Ceramic/Carbon
	Bearings	C3 Shielded ball bearings
	Cable	H07RN-F 10 m or longer upon request
<b>Materials</b>	Pump Casing	Gray Iron
	Impeller	Gray Iron
	Motor Frame	Gray Iron
	Motor Shaft	Stainless Steel
	Grinder Set	Chromium Iron
<b>Max. Liquid Temperature</b>	40°C (104°F)	
<b>Max. Submersion Depth</b>	20 m (66 ft)	
<b>pH Range</b>	pH 5 - pH 8	
<b>Guide Rail</b>	GRG-02	



unit : mm  
C.W.L : Continuous running water level  
L.W.L : Lowest running water level